

# Old North St. Louis Sustainability Vision/Framework Plan

Wes Haid |  SWT DESIGN

**ST. LOUIS**  
7722 Big Bend  
St. Louis, MO 63119

**KANSAS CITY**  
1925 Central St., Suite 202  
Kansas City, MO 64108

## CONSULTANT TEAM



Landscape Architects | Planners | Urban Designers



Environmental Engineers | Civil Engineers | Planners



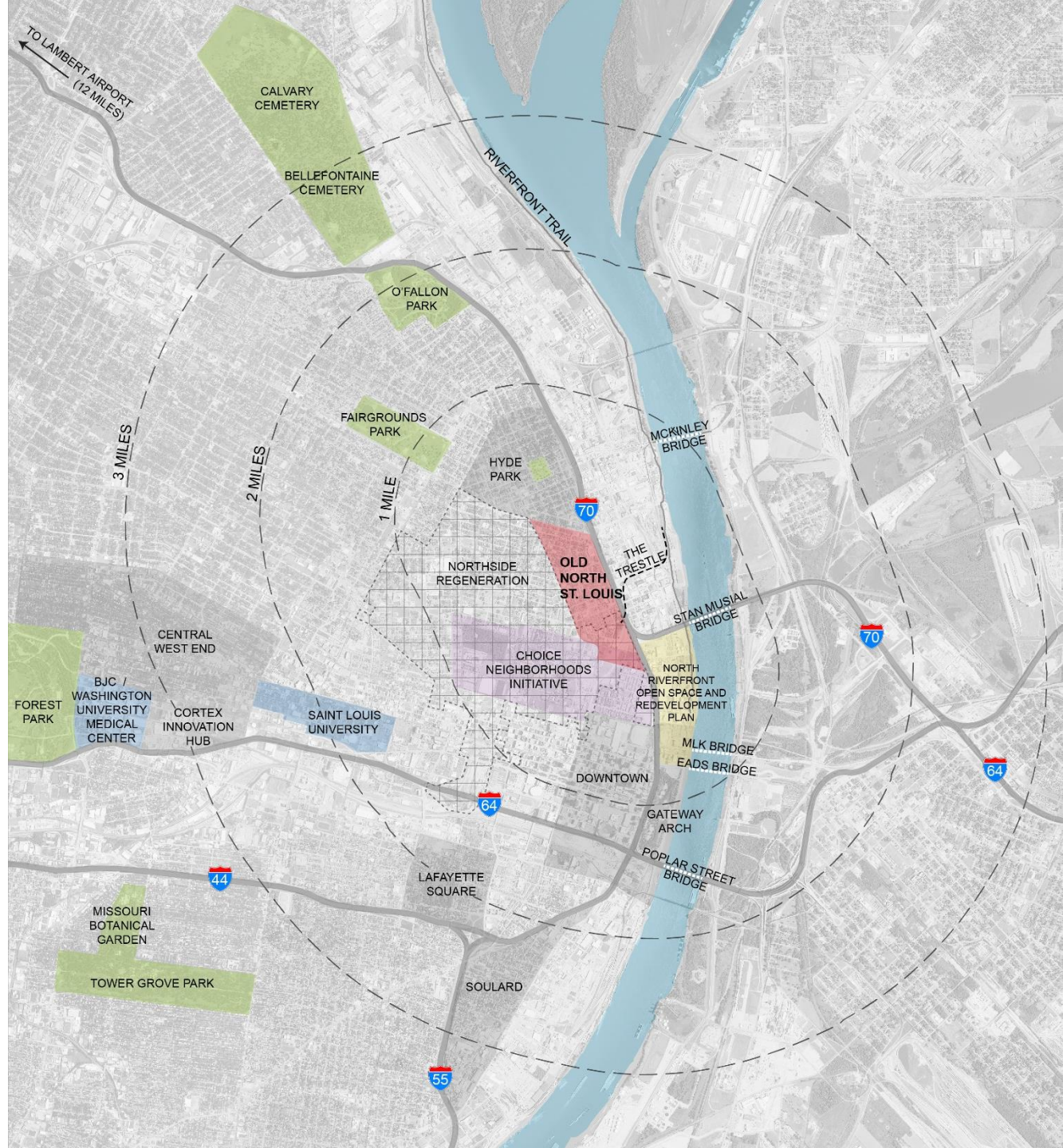
Architects | Historic Preservationists

## STEERING COMMITTEE

City of St. Louis Planning and Urban Design Agency  
Old North Restoration Group  
EPA Office of Sustainable Communities  
White House Strong Cities, Strong Communities

# REGIONAL CONTEXT

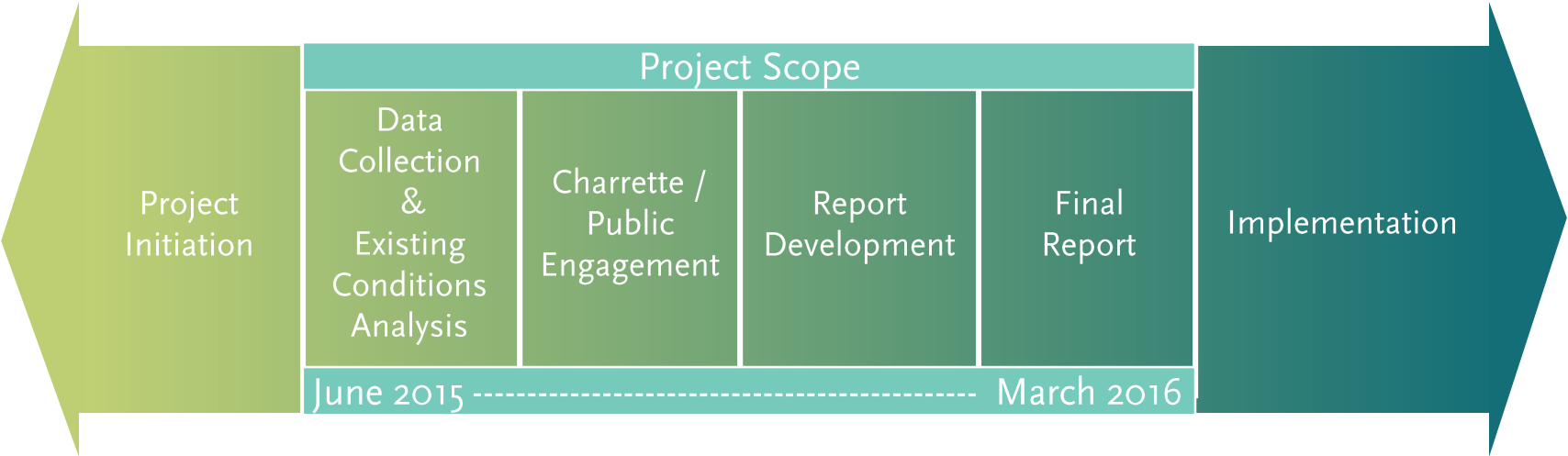
- Proximity to Downtown
- Adjacency to Current Planning Projects
  - North Riverfront
  - Preservation Square
  - Choice Neighborhoods
  - NGA Headquarters
  - GRG Trestle
  - Potential North/South MetroLink Expansion
  - Gateway Arch Renovation



# PROJECT SCOPE

- Develop a vision
  - Guide new growth and development
  - Protect, preserve, and rehabilitate historic character
  - Incorporate sustainable features
  - Enhance the quality of life for residents and visitors

# PROJECT TIMELINE



# PUBLIC ENGAGEMENT WORKSHOP

- 3-Day Workshop
  - Stakeholder Interviews
  - Five Focus Group Sessions
    - Housing & Historic Preservation
    - Environment & Energy
    - Growth
    - Transportation
    - Implementation
  - Public Open House Events
- Participants Included:
  - Neighborhood Residents
  - Four Federal Agencies (EPA, White House Strong Cities Strong Communities, National Parks Service, USDA)
  - Three State Agencies
  - Regional Planning Agencies
  - City Government Officials
  - Local Not-For-Profits
  - University Faculty
  - Community Business Owners
  - Project Stakeholders



# PROJECT GOALS



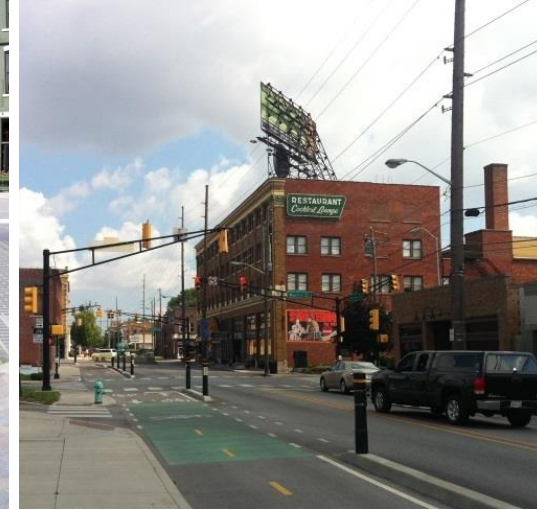
# ENVIRONMENTAL PERFORMANCE

- Use green infrastructure to address stormwater pollution
- Improve energy efficiency of buildings in the neighborhood and incorporate alternative energy production
- Improve air quality



# STRENGTHEN CONNECTIVITY

- Improve pedestrian and bicycle connections to and within the neighborhood
- Incorporate opportunities for public art, wayfinding, and interpretive signage
- Coordinate effort with ongoing projects in the area and neighboring redevelopment initiatives





## PRODUCTIVE LAND USE

- Encourage investment in the vacant and underutilized parcels in the neighborhood
- Determine compatible land uses and building forms
- Consider shared resources such as district composting, waste reduction programs, urban agriculture



An aerial photograph of a city neighborhood, showing a mix of residential and commercial buildings, streets, and green spaces. A large, white, handwritten-style text overlay is centered over the image. The text reads "Overall Neighborhood Strategies". The background shows a dense urban area with various building styles, including brick houses and larger commercial structures. A major road curves through the left side of the image. The sky is clear and blue.

*Overall Neighborhood  
Strategies*

# FOCUS AREAS AND KEY OPPORTUNITIES

## STRENGTHENED RESIDENTIAL

Blair Avenue & Sullivan Avenue

Strengthen Established Residential Areas

## CONNECTOR

St. Louis Avenue

Extend And Connect Commercial / Mixed Use

## GREEN BLOCKS

Hadley Street & Monroe Street

Promote Alley Development

Encourage Neighborhood-Based Infrastructure

## CORRIDOR

N. Florissant Avenue & N. Market Street

Establish Commercial / Mixed Use

Improve Transit / Connectivity

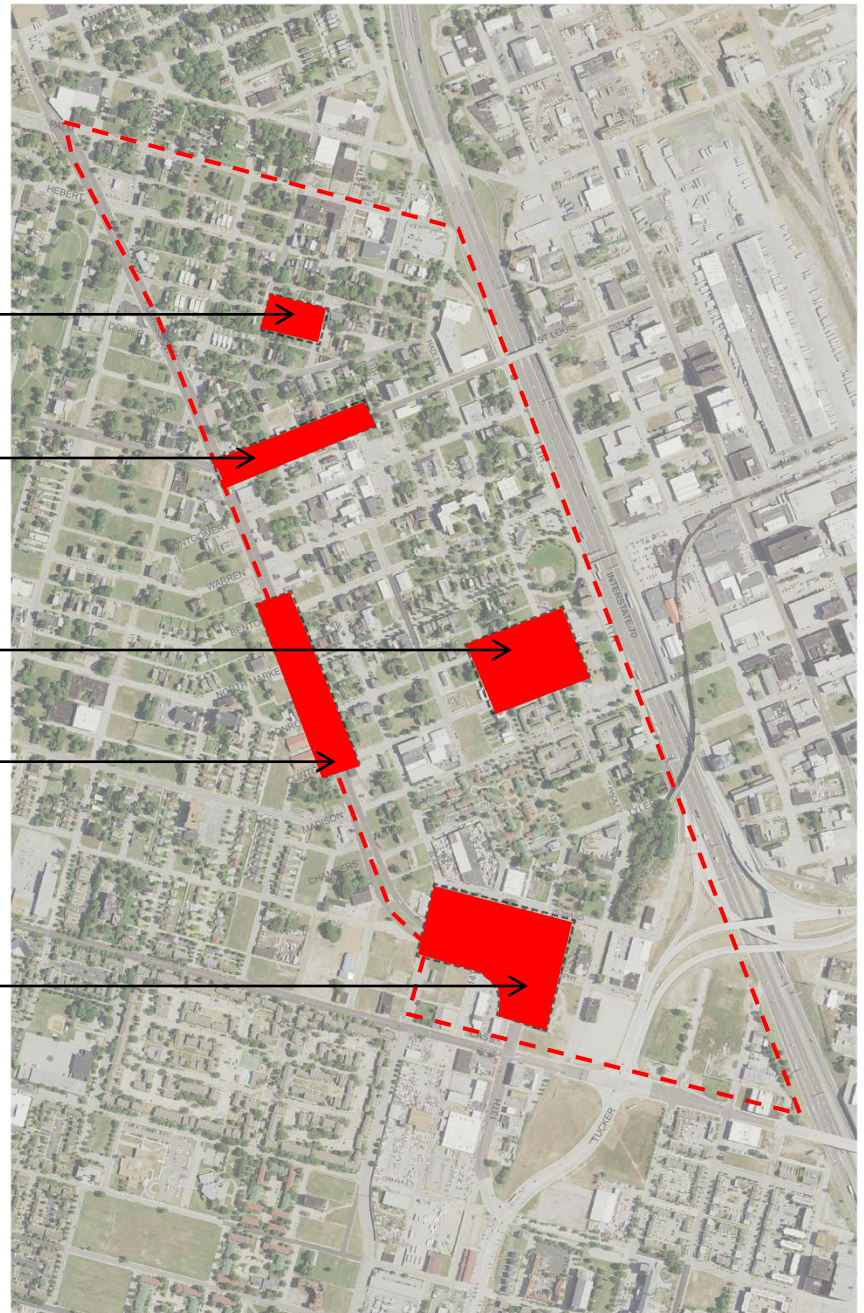
## GATEWAY

N. Florissant & 14<sup>th</sup>

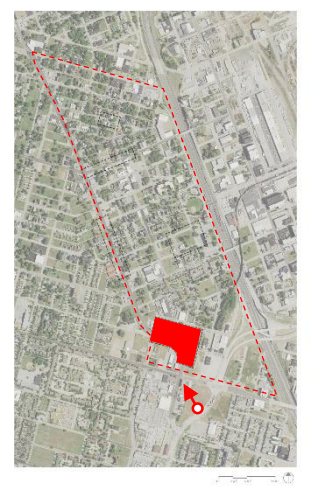
Enhance Brand / Identity

Utilize Alternative Energy Sources

Develop a Multi-Modal Station



# GATEWAY



# GATEWAY



# CORRIDOR



# CORRIDOR



# GREEN BLOCKS

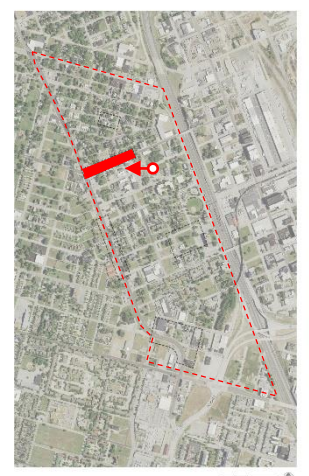




# GREEN BLOCKS



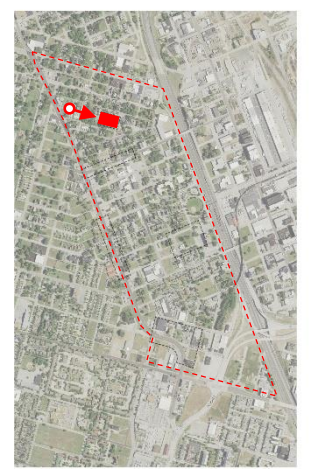
# CONNECTOR



# CONNECTOR



# STRENGTHENED RESIDENTIAL



# STRENGTHENED RESIDENTIAL



For Full Report:

[www.epa.gov/smartgrowth/old-north-st-louis-sustainably-developing-historic-district](http://www.epa.gov/smartgrowth/old-north-st-louis-sustainably-developing-historic-district)

Google Search: "EPA Old North St. Louis"

Wes Haid |  SWT DESIGN

**ST. LOUIS**  
7722 Big Bend  
St. Louis, MO 63119

**KANSAS CITY**  
1925 Central St., Suite 202  
Kansas City, MO 64108